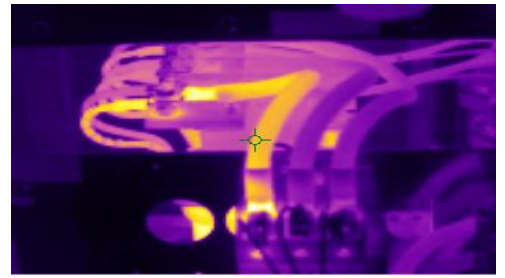


CONDITION MONITORING - THERMAL IMAGING



Corke Instrument Engineering (Australia) Pty Ltd is a highly specialised and diversified Instrumentation and Electrical contracting company, with over 30 years of dedicated service to industry.

Our service group provides backup and support 24 hours a day 7 days a week. Condition monitoring services form part of these offerings with techniques such as power analysis, vibration analysis and thermal imaging.

Condition monitoring is the process of monitoring a parameter in equipment, such that significant change is indicative of a developing failure. It is a major component of predictive maintenance and is typically much more cost effective than allowing equipment to fail. Visual inspection by experienced maintainers is the most rudimentary form of condition monitoring and should never be underestimated. Consequently, other forms of condition monitoring such as thermal imaging should generally augment and not replace visual inspection.

What is Thermal Imaging?

A thermal imaging camera will detect and record electromagnetic radiation, representing these infrared images pictorially together with an absolute temperature. The process of thermal imaging is when this type of camera is used to inspect equipment as part of a condition monitoring program.

When would thermal imaging give me the most benefit and how do I maximise these benefits?

It is recommended to time Thermal Imaging surveys so they occur prior to planned shutdown maintenance.

Whilst thermal imaging will provide value any time in equipment lifecycle; it is most beneficial immediately after commissioning. This provides baseline data about the equipment conditions – what "normal" actually is – as well as confirming that commissioning has been properly completed. Regular surveys provide data which enables the trending of equipment condition, providing maximum opportunity to rectify any presenting issue, before it becomes a problem.

Health Safety and Environment

As you would expect from a credible contractor such as Corke, we conduct thermal imaging inline with the latest health and safety 'best practice' guidelines. We strive for excellence in safety and environmental performance, and ensure that our safety systems are aligned with our clients when performing work on their behalf.



Don't get left in the dark, call Corke today!

Thermal Imaging surveys are a highly efficient non intrusive and non destructive means of recognising heating concerns with faulty plant and equipment, and are particularly useful on electrical equipment.

Where would I use this testing?

Thermal Imaging applications vary widely including freezers and electrical equipment through to veterinary with muscle inflammation. At Corke we specialise in equipment primarily related to industrial plant and electrical systems including;

- Bearings
- Main and sub main cables
- Bus ducts
- Main switch boards
- Distribution boards
- Motor control panels
- Motors
- Substations
- High voltage boards
- Transformers

The benefits speak for themselves!

- Relatively low cost
- Highly convenient
- Non-destructive
- Minimal disruption
- Relatively quick
- No need for shutdowns
- Results are highly accurate
- Detailed full colour reports with recommendations and priority indications for identified faults

24/7 Breakdown support 0418 517 748

HEAD OFFICE

15 Export Drive, Brooklyn, Vic 3025

Ph: +61 3 9362 4100

Email: corke@corke.com.au

Web: www.corke.com.au